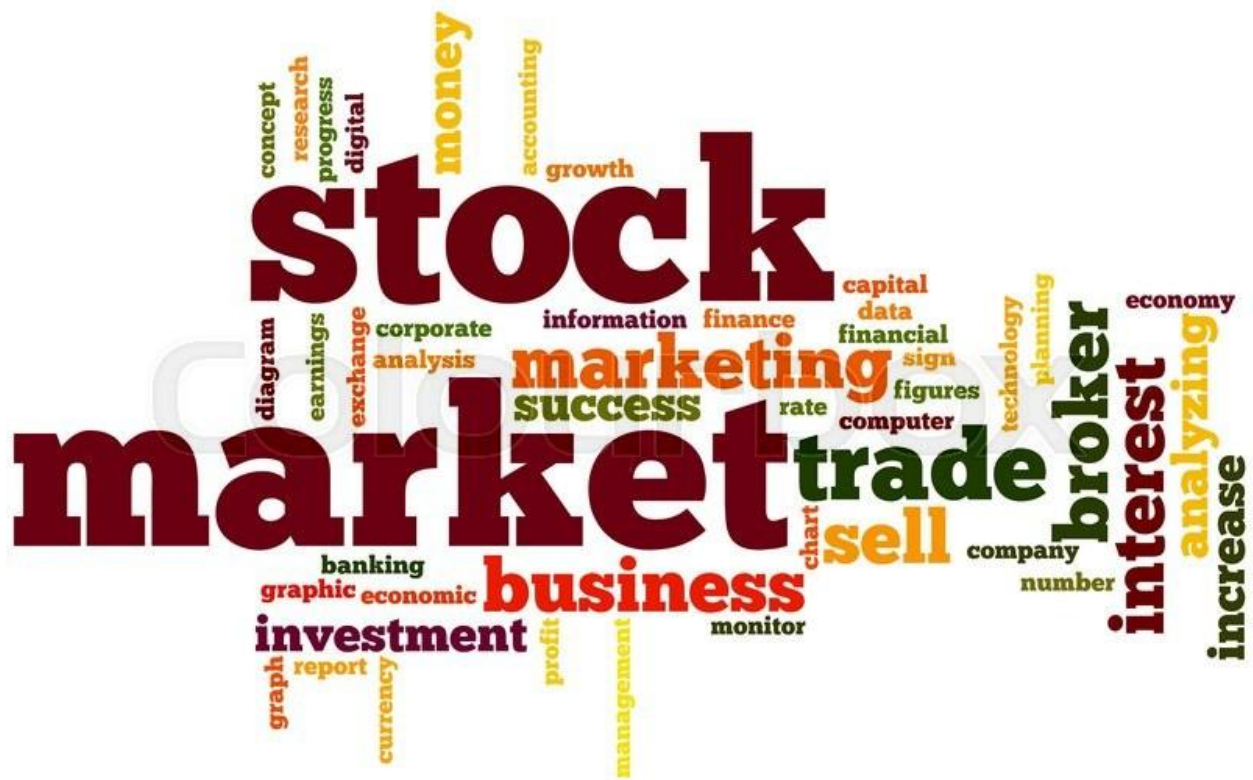




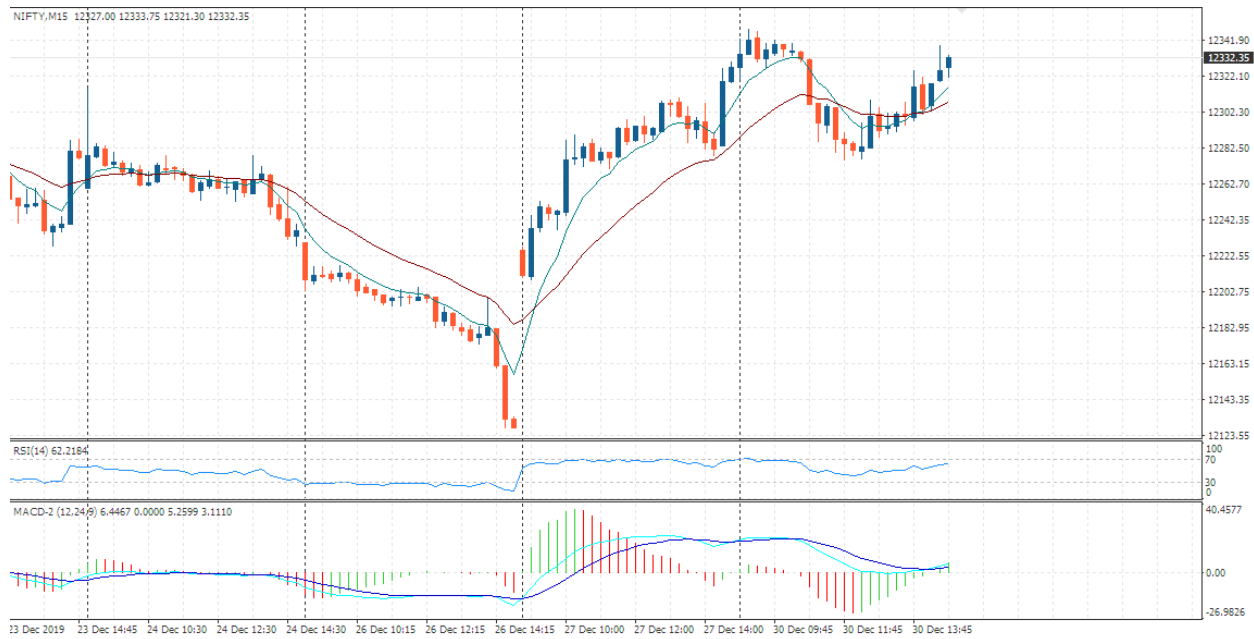
# Daily Report

30-12-2019

---



# MARKET WRAPUP:

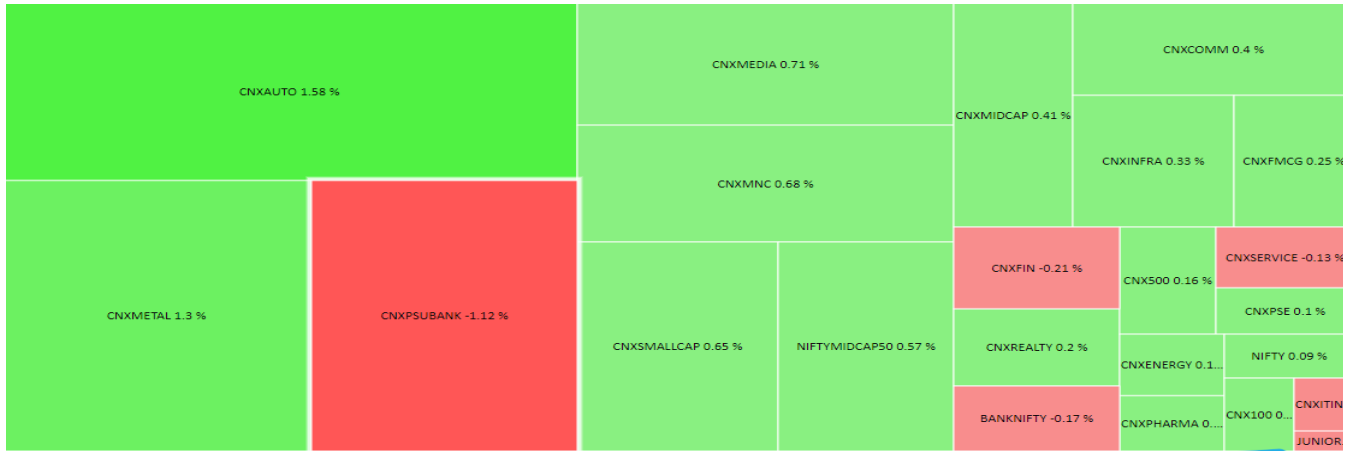


Equity markets ended the penultimate trading session of the calendar year 2019 on a flat note amid mixed global cues and lack of market participants in the holiday season.ensex on Monday lost 17 points or 0.04 percent to settle at 41,558 amid selling in financial and IT bellwethers. NSE's Nifty closed at 12,261, up 15 points or 0.12 percent. Volatility index India VIX surged around 3.5 per cent to 10.89 levels. Market breadth remained in favour of advances. TATAMOTORS, EICHERMOTORS, UPL are the top gainers while the YESBANK, ICICIBANK, SBINBANK are the top losers of the day.

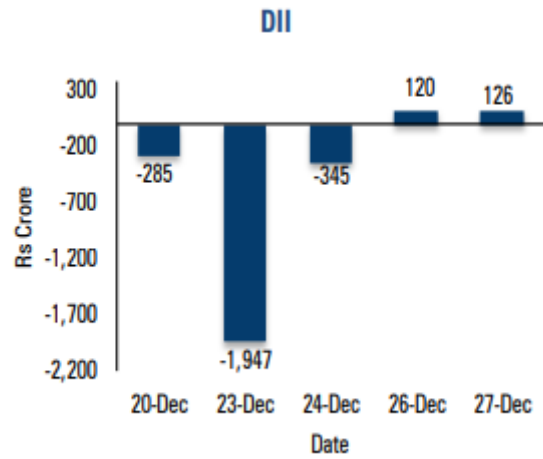
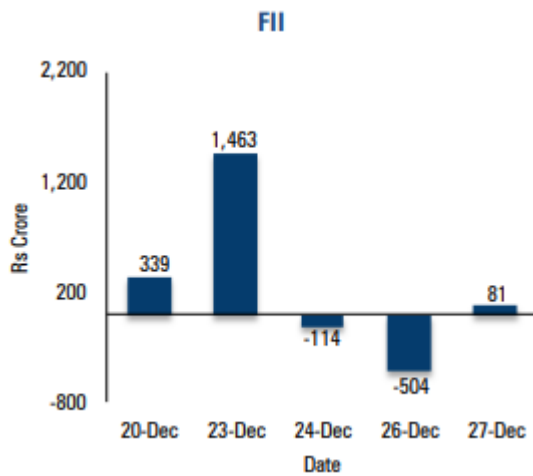
## NIFTY PIVOTS

SCRIPT	R1	R2	R3	PIVOT	S1	S2	S3
NIFTY	12361	12390	12462	12318	12289	12246	12174

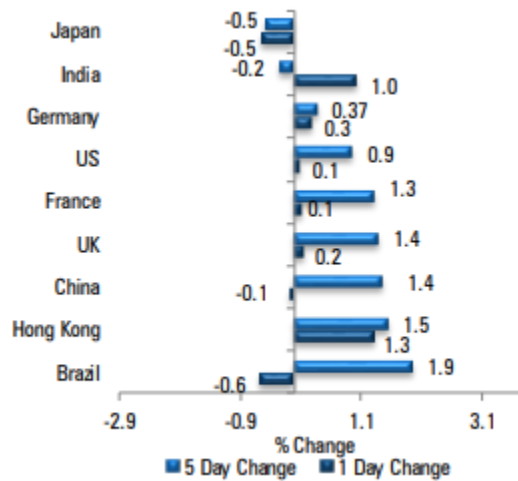
## INDEX HEAT MAP:



## Fund Flow Activities In Last 5 Sessions



## Global Equity Market Performance:



## STOCK IN NEWS

**Tata Motors:** Shares of Tata Motors were up nearly 3 per cent to Rs 181 on the BSE on Monday, gaining more than 50 per cent in October-December quarter. The stock of Tata Group automobiles company is set to post its sharpest quarterly gain in the past one decade. Thus far in the fourth quarter of current calendar year 2019 (Q4CY19), shares of Tata Motors have rallied 54 per cent, as compared to 7.5 per cent rise in the S&P BSE Sensex. The stock hit a 52-week low of Rs 106 on September 4, 2019

**Adani Ports:** Shares of Adani Ports and Special Economic Zone (SEZ) gained nearly 2 per cent in the early trade on the BSE on Monday after Adani Logistics, a subsidiary of the company, announced on Friday it had signed an agreement to acquire a 40.25 per cent stake in Snowman Logistics from Gateway Distriparks for Rs 296 crore. The purchase price of Rs 44 per share is a 3.2 per cent premium to the market price of December 27, and a 12 per cent premium to the 60-day volume weighted average price (VWAP), said a company release

**Gateway Distriparks:** Shares of Gateway Distriparks (GDL) were up 12 per cent to Rs 123 on the BSE on Monday. The stock has rallied 29 per cent in the past three trading days after the company announced plan to sell entire stake sale in Snowman Logistics to Adani Logistics for around Rs 296 crore. The trading volumes on the counter jumped more than eight-fold today. A combined 1.23 million equity shares changed hands on the NSE and BSE till 10:26 am. In comparison, the S&P BSE Sensex was up 0.28 per cent at 41,690 points.

**Prince Pipes:** Shares of Prince Pipes and Fittings Ltd made a tepid market debut today and listed at Rs 160, a 10 per cent discount against its issue price of Rs 178 per share on the BSE. Post-listing, the stock hit an intra-day low of Rs 152.60 only to quickly pare losses and inch as high as Rs 165.90 per shar on the exchange.

# STOCK RECOMMENDATIONS

## TODAY:

SCRIPT	ACTION	LEVEL	RESULT
JUSTDIAL (CASH)	BUY	B-581 T-587 SL-576	
M&M(FUT)	BUY	B-541.6 T-536 SL-547	

## YESTERDAY:

SCRIPT	ACTION	LEVEL	RESULT
JUBLFOOD (CASH)	BUY	B-1629 T-1642 SL-1615	DOES TARGET
CHOLAFIN(FUT)	BUY	B-307.40 T-312 SL-302	DOES ALMOST TARGET(MADE A HIGH OF 310.75)